



Heathfield  
COMMUNITY SCHOOL

# Uniform Policy 2023/2024

- Student and Parental Information





Heathfield  
COMMUNITY SCHOOL

# Why does Heathfield Community School have a uniform for pupils?

- **Health and safety** - ensuring students are safe in the busy environment of a school, including on playgrounds, workshops, science labs and playing fields .
- **Ready for learning** - ensuring students can access all learning activities, such as using a computer keyboard, drills and Bunsen burners .
- **Business attire** - maintaining a professional atmosphere, suitable for the work environment, and creating a sense of purpose and pride.
- **Affordable and equitable** - ensuring a unified school community, with no apparent inequalities of wealth. Ensuring no parent will feel they have let their child down if they are not able to afford fashion items of clothes or footwear .
- **Protecting childhood** - appropriate for children aged 16 and under
- **Avoiding sexist or trans phobic policies** - not allowing old-dated, misogynistic or trans phobic language or attitudes to persist .

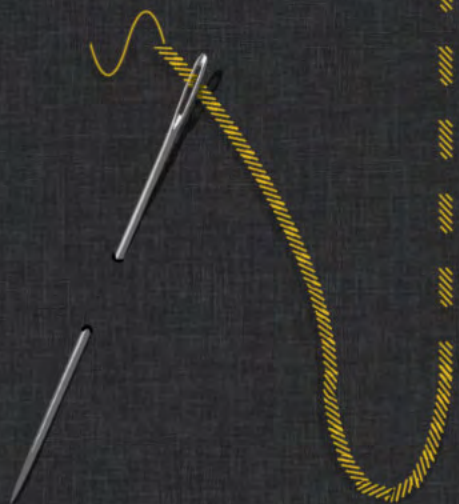




Heathfield  
COMMUNITY SCHOOL

# #PROUD2BHEATHFIELD

- Uniform is worn as a sign of commitment to Heathfield Community School and its ethos. We have high expectations of appearance and, therefore, we expect parents and students to co-operate with us to promote the highest standards of appearance, manners and behaviour.
- Heathfield expects all students to adhere to our school uniform policy. We expect parents to support this policy by ensuring that their children leave home in the morning correctly dressed for working in school.
- It is a requirement for attending our Community School.





Heathfield  
COMMUNITY SCHOOL



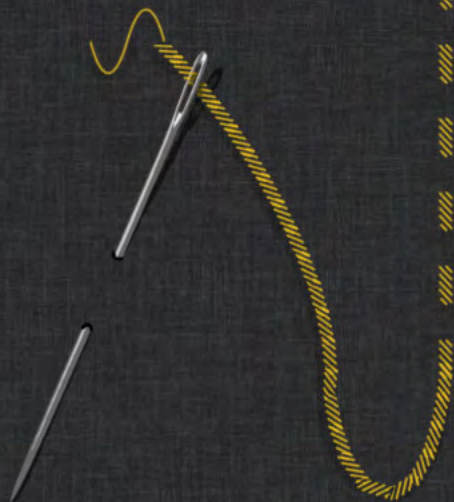
# Heathfield Uniform





Heathfield  
COMMUNITY SCHOOL

#proud2bheathfield





Heathfield  
COMMUNITY SCHOOL

# School Jumper, Shirt and Tie

- School Jumper with Heathfield Gold Leaf logo. Students have to wear their school jumper at all times unless they have permission from a member of staff to take it off.
- Heathfield Tie.
- Plain White Shirt (Long or short sleeved), tucked in.
- Ties are compulsory at all times. They should not be taken off during the school day apart from PE/ Dance lessons.





Heathfield  
COMMUNITY SCHOOL

# School Trousers

- **School Trousers – PLAIN and BLACK**
- Must be standard, tailored school trousers.





Heathfield  
COMMUNITY SCHOOL

# Trousers – Not Permitted

They must not be 'skinny's', flares, jeggings or jeans. No back patch pockets.







Heathfield  
COMMUNITY SCHOOL

- **Heathfield School Skirt Only –**  
Gold leaf on the hem. To be worn at the knee.

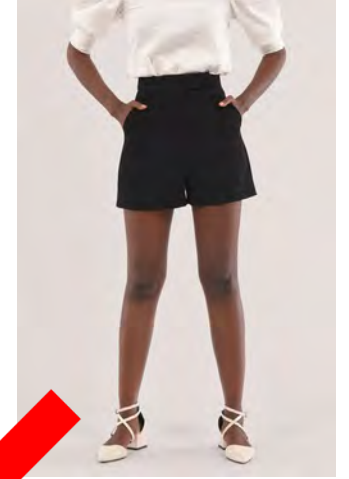
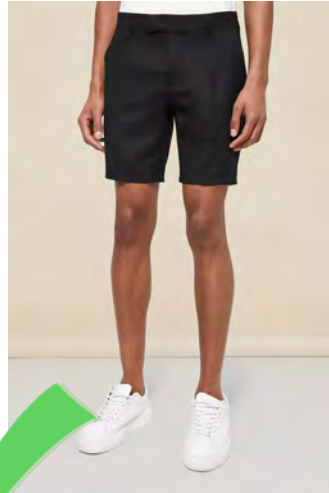




Heathfield  
COMMUNITY SCHOOL

# Tailored School Shorts

- Tights can also be worn under tailored shorts





Heathfield  
COMMUNITY SCHOOL

# School Shoes

- Shoes – Black Formal Polishable Shoes Only.

If you need to wear **specific shoes**, for medical or sensory reasons, your parent/carer should have a discussion at the **start of each year** with your form tutor or year head. You will be issued a card to carry with you to show what **reasonable adjustments** have been made to the policy.





Heathfield  
COMMUNITY SCHOOL

# Shoes - Not Permitted

- No Trainers of any kind (Nike air force ones are not allowed)
- No Vans/ converse style shoes
- No boots
- If your child has a medical note – they need to wear unbranded trainers (Including No Nike air force ones, vans, converse) – this note needs to go to the Head Of Year.





Heathfield  
COMMUNITY SCHOOL

# Black Socks and Black Tights

- **Socks must be plain black only.**  
No white, patterns or colour.
- Black tights





Heathfield  
COMMUNITY SCHOOL

# Jumpers and Coats

- It is acceptable to wear a coat before and after school. These must be taken off in lessons.
- Hoodies/ non school jumpers are Not Permitted
- PE hoodies are only to be worn in PE lessons.





Heathfield  
COMMUNITY SCHOOL

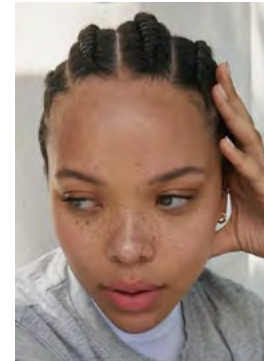
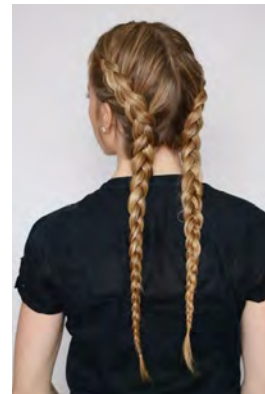
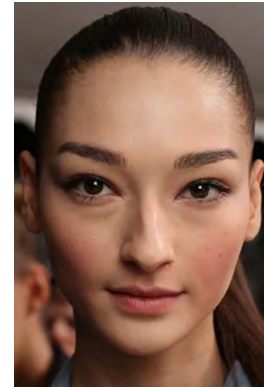
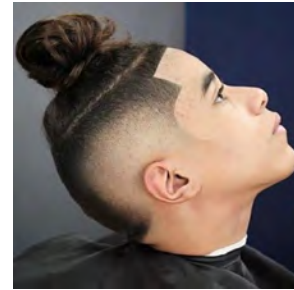
# Belts

- Belts must be plain and black

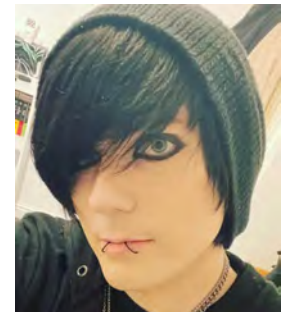
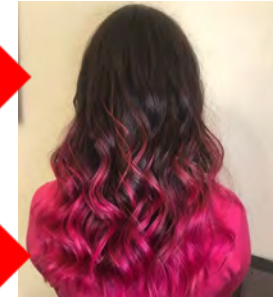




Heathfield  
COMMUNITY SCHOOL



# Hair and make up



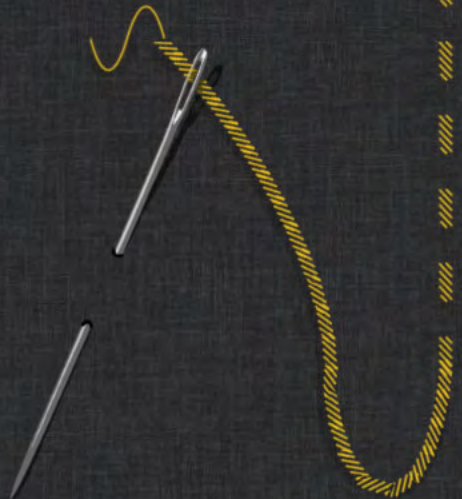




Heathfield  
COMMUNITY SCHOOL

# Hairstyles/ Nails

- Hair styles need to be natural and discreet.
- Hair should be neat and hair colours limited to natural tones. Extreme hairstyles are not appropriate for school, for example, hair shorter than a grade 2. Hair can be dyed but only natural colours are allowed (ie **NO** blue/pink/red/green/bleached etc).
  - No Nail extensions





Heathfield  
COMMUNITY SCHOOL

- **Make-up, if worn, should be discreet and natural. Make up should be age appropriate.**
- **No Fake Eye Lashes.**





Heathfield  
COMMUNITY SCHOOL



# Jewellery

- **Jewellery – Students may wear a neck chain of sentimental or religious significance; a single plain ring on one finger per hand; a single earring (Stud/ sleeper in each ear- no hoops or large earrings; 1 Bracelet or watch on each arm.**
- **Nose studs, which are a clear, silver or gold stud are acceptable. No Nose rings allowed.**
- **No other facial jewellery allowed – Eyebrows/ tongue piercings.**