



**Cabot
Learning
Federation**

**RHSE Policy
including
Relationships
Education, Health
Education and Sex
Education**

Date Adopted: July 2020, Cabot Learning Federation

Implementation Date: 1st September 2022

Date Adopted MWA: 11/02/2025

History of most recent Policy changes

Date	Page	Change	Origin of Change e.g. TU request, Change in legislation
Date	E.g., Whole Document	Detail of change	Reason for change
14 July 2020	Whole Document	Creation of Policy	In line with new RHSE legislation 2020.
October 2020	Appendices and updates	Consultation with families – during Term 1 2020	Updates to reflect the consultation
November 2021	Minor edits and EQIA	Reflecting feedback from BBA consultation and other local academy feedback.	Updates to reflect the consultation as part of annual review cycle Referencing the guidance relating to three terms before leaving students need the content.
October 2022	Minor edits only	Reflecting updated statutory documents including Keeping Children Safe in Education and updated policy documents.	Update for annual review

Contents

History of most recent Policy changes.....	2
Contents.....	3
1 Introduction.....	4
2 Aims	4
3 Relationship and Sex Education (Relationships, Health and Sex Education).....	5
4 Health Education including substance education, mental health education and safety education	9
Appendix 1 - DfE Expectations	13
Appendix 2 – Jigsaw mapping	20
Appendix 3 – Legislation and Guidance	25

1 Introduction

1.1 All schools must provide a curriculum that is broadly based, balanced and meets the needs of all pupils. Under section 78 of the Education Act 2002 and the Academies Act 2010, a PSHE curriculum:

- Promotes the spiritual, moral, cultural, mental and physical development of pupils at the school and of society
- Prepares pupils at the school for the opportunities, responsibilities and experiences of later life.

1.2 An amendment to the Children and Social Work Act 2017 made **Relationships and Health Education** at primary; and Relationships, Sex, and Health Education at secondary, statutory subjects. The DfE guidance on Relationships, Health and Sex Education for governing bodies can be seen [here](#). **This became active from September 2020.**

1.3 **This policy is also underpinned by a range of other legislation and guidance – please see appendix 1 for a full list and links to the additional documentation.**

2 Aims

2.1 The aims of the policy are:

- To provide pupils with the knowledge, understanding, attitudes, values and skills they need in order to reach their potential as individuals and within the community, and to make sense and meaning of themselves and their world, to gain a sense of self, sense of place and develop self-agency to enable them to make positive choices in life and their community.
- To enable pupils to be healthy, safe and informed young people, who can make positive life choices and prepare for the physical and emotional changes they will encounter as they grown into young adults.

2.2 Pupils take part in a variety of learning opportunities across and beyond the curriculum, contributing fully to the life of their school and communities and being active citizens. In doing so they learn to recognise their own worth, work well with others, and form positive relationships, and become increasingly responsible for their own learning. They reflect on their experiences and understand how they are developing personally and socially, tackling many of the spiritual, moral, social and cultural issues that are part of growing up. They become aware of their own feelings and the feelings of others. They also develop their own opinions and values, and recognise that the opinions and values of others may be different from theirs.

2.3 They learn to understand and respect our common humanity; diversity and differences so that they can go on to form the effective, fulfilling relationships that are an essential part of life and learning.

2.4 The Cabot Learning Federation is committed to, recognises, and celebrates diversity and intersectionality, including that which exists within our pupil and staff populations and the communities we serve. We are committed to advancing equal opportunities for all and eliminating discrimination on any basis, including age, disability, gender reassignment, marriage and civil partnership, pregnancy and maternity, religion or belief, sex and sexual orientation (defined as Protected Characteristics) so that equality, diversity and inclusion (EDI) underpin all

we do. In relation to the enactment of this policy, this commitment and celebration of diversity will include:

- Develop an understanding of, recognise and respect a range of family groups, including marriage, civil partnerships including same sex relationships, long term partnerships, single parent families and fostered and adopted families.
- Respect our culturally and socially diverse communities and challenge any prejudice and discrimination when it occurs, in line with our HEART values across the trust.
- Understand the democratic process that protects individual liberty.

2.5 In our school we choose to deliver Personal, Social, Health Education responding to the needs of the Academy and Cre8tive and other resources and source materials. This is supplemented with additional resources where appropriate.

3 Relationship and Sex Education (Relationships, Health and Sex Education)

3.1 Definition:

3.1.0 From September 2020, Relationships Education is compulsory for all primary schools as set out in the DfE Guidance (2019). For all maintained schools there is also a statutory duty to provide Health Education. This includes primary aged children learning about the *'changing adolescent body'*, included in the expected outcomes for primary Health Education. (Relationships Education, Relationships and Sex Education, and Health Education, DfE, 2019).

3.1.1 Effective Relationships, Health and Sex Education can make a significant contribution to the development of the personal skills needed by pupils if they are to establish and maintain relationships. It also enables children and young people to make responsible and informed decisions about their health and well-being. This is why the DfE recommend:

"... that all primary schools should have a sex education programme tailored to the age and the physical and emotional maturity of the pupils. It should ensure that both boys and girls are prepared for the changes that adolescence brings and – drawing on knowledge of the human life cycle set out in the national curriculum for science - how a baby is conceived and born." (Relationships Education, Relationships and Sex Education, and Health Education, DfE, 2019, para 67).

3.2 Compulsory aspects of Relationships, Sex and Health Education.

3.2.0 End of primary expectations and curriculum content is given in the Relationships Education, Relationships and Sex Education, and Health Education DfE guidance (2019). These are available in Appendix 1.

3.2.1 The sex education contained in National Curriculum science (Key Stages 1–4) is compulsory.

- 'All children, including those who develop earlier than average, need to know about puberty before they experience the onset of physical changes' (1.13)
- Children should learn 'how a baby is conceived and born' before they leave primary school (1.16)

3.2.2 RHSE plays a very important part in fulfilling the statutory duties all schools have to meet. RHSE helps children understand the difference between safe and abusive relationships and

equips them with the skills to get help if they need it. It also teaches them about the importance of a healthy lifestyle and positive mental health, about online and off line safety. Schools have responsibilities for safeguarding and a legal duty to promote pupil well-being (Education and Inspections Act 2006 Section 38).

- RHSE is an important part of Personal, Social, Health Education (PSHE) (DfE, 2014).
- When any school provides RSHE they must have regard to the Secretary of States guidance; this is a statutory duty. Ofsted will evaluate how schools help to ensure a healthy lifestyle for their children (Ofsted, 2019, Education Inspection Framework Para 28).

3.2.3 RHSE has clear links with other school policies aimed at promoting pupils' spiritual, moral, social and cultural development, including:

- Anti-Bullying Policy
- Behaviour Policy
- Equal Opportunities Policy
- Health and Safety Policy
- ICT Policy and Safe Internet Use Policy
- Inclusion Policy
- Safeguarding/Child Protection Policy
- Special Educational Needs Policy

3.3 The role of the Principal, Academy Council and CLF Board

3.3.0 It is the responsibility of the CLF board to ensure that as well as fulfilling their legal obligations, the boards should also make sure that:

- all pupils make progress in achieving the expected educational outcomes in regard to RHSE;
- RHSE is well led, effectively managed and well planned;
- the quality of RHSE provision is subject to regular and effective self-evaluation;
- teaching is delivered in ways that are accessible to all pupils with SEND;
- clear information is provided for parents and carers on the subject content and the right to request that their child is withdrawn; and,
- the subjects are resourced, staffed and timetabled in a way that ensures that the school can fulfil its legal obligations
- Monitor the RHSE policy on an annual basis

3.3.1 The Principal liaises with external agencies regarding the school RHSE programme and ensures that all adults who work with children on these issues are aware of the school policy, and that they work within this framework. The Principal monitors this policy on a regular basis and reports to the Academy Council, when requested, on the effectiveness of the policy. Parents have been consulted on the RHSE policy into practice and provision and have the opportunity to express their views.

3.4 Equalities

3.4.0 The Equality Act 2010 determines the way the curriculum is delivered, as schools and other education providers must ensure that issues are taught in a way that does not subject pupils to discrimination, and in a way which supports a clear understanding of the protected characteristics under the Equalities Act 2010. Schools have a duty under the Equality Act to



ensure that teaching is accessible to all children and young people, including, when thinking specifically about Relationships, those who are lesbian, gay, bisexual and transgender (LGBT). Inclusive RHSE will foster good relations between pupils, tackle all types of prejudice and promote understanding and respect. The Department for Education has produced advice on The Equality Act 2010 and schools (DfE, 2014b).

- 3.4.1 Schools have a legal duty to promote equality (Equality Act, 2010) and to combat bullying (Education Act, 2006) (which includes homophobic, sexist, sexual and transphobic bullying) and Section 4.2 of the national curriculum (2014) states “Teachers should take account of their duties under equal opportunities legislation that covers race, disability, sex, religion or belief, sexual orientation, pregnancy and maternity, and gender reassignment.”
- 3.4.2 “Schools should be alive to issues such as everyday sexism, misogyny, homophobia and gender stereotypes and take positive action to build a culture where these are not tolerated, and any occurrences are identified and tackled. Staff have an important role to play in modelling positive behaviours. School pastoral and behaviour policies should support all pupils.” (DfE, 2019)

3.5 RSE sample content – the detail of the content mapped out using Cre8tive is included within the appendix 2

3.6 Withdrawal from Relationship and Sex Education lessons

3.6.0 Parents/carers have the right to withdraw their children from Sex Education provided at school **except for those parts included in statutory National Curriculum Science and that included within Statutory Relationships and Health Education**. Those parents/carers wishing to exercise this right are invited in to see the Principal in school who will explore any concerns and discuss any impact that withdrawal may have on the child. Withdrawal will be monitored across the trust to enable us to work positively and proactively with families and community groups. Once a child has been withdrawn they cannot take part in the **specific sex education lessons (this does not include the science lessons)** until the request for withdrawal has been removed. Materials are available to parents/carers who wish to supplement the school sex education programme or who wish to deliver sex education to their children at home. **Parents and carers cannot withdraw from any aspect of Relationships Education and Health Education lessons covering the changing adolescent body (puberty).**

3.7 Working with parents and carers

3.7.0 The government guidance on Relationships, Sex Education and Health Education (DfE, 2019) emphasises the importance of schools working in partnership with parents and carers. Parents/carers should be aware that schools are legally required to provide a broad and balanced curriculum. Sex, health and relationships topics can arise incidentally in other subjects, such as Science, Geography, History, RE, and it is not possible to withdraw pupils from these relatively limited and often unplanned discussions. Parents should be given every opportunity to understand the purpose and content of Relationships Education and RSHE. Good communication and opportunities for parents to understand and ask questions about the school's approach can help increase confidence in the curriculum.

4 Health Education including substance education, mental health education and safety education

4.1 Effective Health Education can make a significant contribution to the development of the personal skills needed by pupils as they grow up. It also enables young people to make responsible and informed decisions about their own and others' health and well-being. Safer online awareness through the curriculum – in the CLF RSHE curriculum content, children are given the opportunity to learn about how to keep themselves and others safe online. Proactive and preventative curriculum content which addresses contextual safeguarding risks is planned in through clear and regular communications within Safeguarding and Leadership teams. Within the CLF Safeguarding policy 2022, there is an expectation that the Designated Safeguarding Lead works alongside the SLT and teaching teams to develop an effective and proactive culture of safeguarding across the Academy, including links to Online Safety, Relationship, health and sex education and PSHE.

4.2 Moral and Values Framework

4.2.0 The Health Education programme at our school reflects the school ethos and demonstrates and encourages the following values. For example:

- Respect for self
- Respect for others
- Responsibility for their own actions
- Responsibility for their family, friends, schools and wider community

Jigsaw's Health Education Content **(MWA uses Cre8tive not Jigsaw)**

4.2.1 The grid below shows specific Health Education content for each year group:

Age

4-5	Understanding feelings; Identifying talents; being special; challenges; perseverance; goal-setting; overcoming obstacles; seeking help; physical activity; healthy food; sleep; keeping clean; being safe; respecting my body; growing up; growth and change; fun and fears; celebrations.
5-6	Feeling special and safe; rewards and feeling proud; consequences; setting goals; identifying successes and achievements; tackling new challenges; identifying and overcoming obstacles; feelings of success; keeping myself healthy; healthier lifestyle choices (including oral health); keeping clean; being safe; medicine safety/safety with household items; road safety; linking health and happiness; people who help us; changes in me; changes since being a baby; linking growing and learning; coping with change.
6-7	Hopes and fears for the year; recognising feelings; achieving realistic goals; perseverance; motivation; healthier choices;

	relaxation; healthy eating and nutrition; healthier snacks and sharing food; growing from young to old.
7-8	Self-identity and worth; positivity in challenges; responsible choices; giving and receiving compliments; difficult challenges and achieving Success; dreams and ambitions; new challenges; motivation and enthusiasm; recognising and trying to overcome obstacles; evaluating learning processes; managing feelings; simple budgeting; exercise; fitness challenges; food labelling and healthy swaps; attitudes towards drugs; keeping safe and why it's important online and off line; respect for myself and others healthy and safe choices; body changes at puberty.
8-9	What motivates behaviour; rewards and consequences; accepting self and others; understanding influences; hopes and dreams; overcoming disappointment; creating new, realistic dreams; achieving goals; resilience; positive attitudes; healthier friendships; group dynamics; smoking; alcohol; assertiveness; peer pressure; celebrating inner strength; jealousy; love and loss; memories of loved ones; body changes at puberty.
9-10	Being a citizen; rights and responsibilities; rewards and consequences; how behaviour affects groups; democracy, having a voice, participating; material wealth and happiness; future dreams; the importance of money; jobs and careers; dream job and how to get there; goals in different cultures; supporting others (charity); motivation; smoking, including vaping; alcohol; alcohol and anti-social behaviour; emergency aid; body image; relationships with food; healthy and safe choices; motivation and behaviour; changes in the body at puberty.
10-11	Choices, consequences and rewards; group dynamics; democracy, having a voice; emotions in success; making a difference in the world; motivation; recognising achievements; compliments; taking personal responsibility; how substances affect the body; exploitation, including 'county lines' and gang culture; emotional and mental health; managing stress; mental health; identifying mental health worries and sources of support; love and loss; managing feelings; power and control; assertiveness; technology safety; take responsibility with technology use; self-image; body image; impact of media; discernment; puberty; reflections about change; respect and consent.

4.2.2 For those Academies not using Jigsaw, the content needs to be in-line with legislation and take into account guidance, including the PSHE Association framework. Please see Appendix 2 for Cre8tive mapping which is used in MWA.

4.2.3 An example may look like the following overview:

KS3 1 hour a week					
Year 7					
T1: Health and wellbeing	T2: Living in the wider world	T3: SRE	T4: Health and wellbeing	T5: SRE	T6: Living in the wider world.
Year 8					
T1: Health and wellbeing	T2: Living in the wider world	T3: SRE	T4: Health and wellbeing	T5: SRE	T6: Living in the wider world.
KS4 Delivered as Drop Down Days					
Year 9					
T1: Health and wellbeing	T2: Living in the wider world	T3: SRE	T4: Health and wellbeing	T5: SRE	T6: Living in the wider world.
Year 10					
T1: Health and wellbeing	T2: Living in the wider world	T3: SRE	T4: Health and wellbeing	T5: SRE	T6: Living in the wider world.
Year 11					

Three Subject Areas:

- Health and wellbeing
- Living in the wider world
- Relationships and sex Education

4.3 Differentiation/SEND

4.3.0 As with all subjects, teachers will need to tailor each lesson to meet the needs of the children in their class.

4.3.1 They will consider:

- How the needs of particular pupils will be met
- How provision is inclusive of all pupils and consistent with the Equality Act

4.4 Safeguarding

The school has a separate Safeguarding and Child Protection Policy. RHSE, Online Safety, PSHE - all play an important part in helping children to understand the difference between safe and unsafe relationships and equips them with the skills to get help if they need it. Effective RSE may bring about disclosures of child protection issues and staff are fully aware of the procedures for reporting their concerns. Safeguarding through the curriculum is an essential aspect of the enactment of this policy. Children are taught about how to stay safe online, through both the RSHE and the computing curriculum, in addition to the broader PSHE curriculum.

4.4.0 Teachers need to be aware that sometimes disclosures may be made during RHSE lessons; in which case, safeguarding procedures must be followed immediately. Sometimes it is clear that certain children may need time to talk one-to-one after the lesson closes. It is important to

allow the time and appropriate staffing for this to happen. If disclosures occur, the school's disclosure and/or confidentiality policy is followed.

4.5 Monitoring and evaluation

4.5.0 The RHSE leader will monitor delivery of the programme through observation and discussion with teaching staff to ensure consistent and coherent curriculum provision.

4.5.1 Evaluation of the programme's effectiveness will be conducted on the basis of:

- Pupil and teacher evaluation of the content and learning processes
- Staff meetings to review and share experience

4.6 External contributors

4.6.0 External contributors from the community, e.g. health promotion specialists, school nurses, social workers, and community police and fire officers, make a valuable contribution to the RHSE and PSHE curriculum. Their input is carefully planned and monitored so as to fit into and complement the learning.

4.6.1 Teachers/leaders are always be present during these sessions and remain responsible for the delivery of the RHSE programme.

Appendix 1 - DfE Expectations

By the end of primary school: Families and people who care for me

Pupils should know

- that families are important for children growing up because they can give love, security and stability.
- the characteristics of healthy family life, commitment to each other, including in times of difficulty, protection and care for children and other family members, the importance of spending time together and sharing each other's lives.
- that others' families, either in school or in the wider world, sometimes look different from their family, but that they should respect those differences and know that other children's families are also characterised by love and care.
- that stable, caring relationships, which may be of different types, are at the heart of happy families, and are important for children's security as they grow up.
- that marriage¹³ represents a formal and legally recognised commitment of two people to each other which is intended to be lifelong.
- how to recognise if family relationships are making them feel unhappy or unsafe, and how to seek help or advice from others if needed.

Caring friendships

Pupils should know

- how important friendships are in making us feel happy and secure, and how people choose and make friends.
- the characteristics of friendships, including mutual respect, truthfulness, trustworthiness, loyalty, kindness, generosity, trust, sharing interests and experiences and support with problems and difficulties.
- that healthy friendships are positive and welcoming towards others, and do not make others feel lonely or excluded.
- that most friendships have ups and downs, and that these can often be worked through so that the friendship is repaired or even strengthened, and that resorting to violence is never right.
- how to recognise who to trust and who not to trust, how to judge when a friendship is making them feel unhappy or uncomfortable, managing conflict, how to manage these situations and how to seek help or advice from others, if needed.

Respectful relationships

Pupils should know

- the importance of respecting others, even when they are very different from them (for example, physically, in character, personality or backgrounds), or make different choices or have different preferences or beliefs.
- practical steps they can take in a range of different contexts to improve or support respectful relationships.
- the conventions of courtesy and manners.
- the importance of self-respect and how this links to their own happiness.
- that in school and in wider society they can expect to be treated with respect by others, and that in turn they should show due respect to others, including those in positions of authority.
- about different types of bullying (including cyberbullying), the impact of bullying, responsibilities of bystanders (primarily reporting bullying to an adult) and how to get help.
- what a stereotype is, and how stereotypes can be unfair, negative or destructive.
- the importance of permission-seeking and giving in relationships with friends, peers and adults.

Online relationships

Pupils should know

- that people sometimes behave differently online, including by pretending to be someone they are not.
- that the same principles apply to online relationships as to face-to-face relationships, including the importance of respect for others online including when we are anonymous.
- the rules and principles for keeping safe online, how to recognise risks, harmful content and contact, and how to report them.
- how to critically consider their online friendships and sources of information including awareness of the risks associated with people they have never met.
- how information and data is shared and used online.

Being safe

Pupils should know

- what sorts of boundaries are appropriate in friendships with peers and others (including in a digital context).
- about the concept of privacy and the implications of it for both children and adults; including that it is not always right to keep secrets if they relate to being safe.

- that each person's body belongs to them, and the differences between appropriate and inappropriate or unsafe physical, and other, contact.
- how to respond safely and appropriately to adults they may encounter (in all contexts, including online) whom they do not know.
- how to recognise and report feelings of being unsafe or feeling bad about any adult.
- how to ask for advice or help for themselves or others, and to keep trying until they are heard.
- how to report concerns or abuse, and the vocabulary and confidence needed to do so.
- where to get advice e.g. family, school and/or other sources.

By the end of secondary school:

Schools should continue to develop knowledge on topics specified for primary as required and in addition cover the following content by the end of secondary:

Families

- that there are different types of committed, stable relationships.
- how these relationships might contribute to human happiness and their importance for bringing up children.
- what marriage is, including their legal status e.g. that marriage carries legal rights and protections not available to couples who are cohabiting or who have married, for example, in an unregistered religious ceremony.
- why marriage is an important relationship choice for many couples and why it must be freely entered into.
- the characteristics and legal status of other types of long-term relationships.
- the roles and responsibilities of parents with respect to raising of children, including the characteristics of successful parenting.
- how to: determine whether other children, adults or sources of information are trustworthy: judge when a family, friend, intimate or other relationship is unsafe (and to recognise this in others' relationships); and, how to seek help or advice, including reporting concerns about others, if needed.

Respectful relationships, including friendships:

Respectful relationships, including friendships Pupils should know

- the characteristics of positive and healthy friendships (in all contexts, including online) including: trust, respect, honesty, kindness, generosity, boundaries, privacy, consent and the management of

conflict, reconciliation and ending relationships. This includes different (non-sexual) types of relationship.

- practical steps they can take in a range of different contexts to improve or support respectful relationships.
- how stereotypes, in particular stereotypes based on sex, gender, race, religion, sexual orientation or disability, can cause damage (e.g. how they might normalise non-consensual behaviour or encourage prejudice).
- that in school and in wider society they can expect to be treated with respect by others, and that in turn they should show due respect to others, including people in positions of authority and due tolerance of other people's beliefs.
- about different types of bullying (including cyberbullying), the impact of bullying, responsibilities of bystanders to report bullying and how and where to get help.
- that some types of behaviour within relationships are criminal, including violent behaviour and coercive control.
- what constitutes sexual harassment and sexual violence and why these are always unacceptable.
- the legal rights and responsibilities regarding equality (particularly with reference to the protected characteristics as defined in the Equality Act 2010) and that everyone is unique and equal.

Online and media

Pupils should know:

- their rights, responsibilities and opportunities online, including that the same expectations of behaviour apply in all contexts, including online.
- about online risks, including that any material someone provides to another has the potential to be shared online and the difficulty of removing potentially compromising material placed online.
- not to provide material to others that they would not want shared further and not to share personal material which is sent to them.
- what to do and where to get support to report material or manage issues online.
- the impact of viewing harmful content.
- that specifically sexually explicit material e.g. pornography presents a distorted picture of sexual behaviours, can damage the way people see themselves in relation to others and negatively affect how they behave towards sexual partners.
- that sharing and viewing indecent images of children (including those created by children) is a criminal offence which carries severe penalties including jail.
- how information and data is generated, collected, shared and used online.

Being safe

Pupils should know

- the concepts of, and laws relating to, sexual consent, sexual exploitation, abuse, grooming, coercion, harassment, rape, domestic abuse, forced marriage, honour-based violence and FGM, and how these can affect current and future relationships.
- how people can actively communicate and recognise consent from others, including sexual consent, and how and when consent can be withdrawn (in all contexts, including online).

Intimate and sexual relationships, including sexual health

Pupils should know

- how to recognise the characteristics and positive aspects of healthy one-to-one intimate relationships, which include mutual respect, consent, loyalty, trust, shared interests and outlook, sex and friendship.
- that all aspects of health can be affected by choices they make in sex and relationships, positively or negatively, e.g. physical, emotional, mental, sexual and reproductive health and wellbeing.
- the facts about reproductive health, including fertility, and the potential impact of lifestyle on fertility for men and women and menopause.
- that there are a range of strategies for identifying and managing sexual pressure, including understanding peer pressure, resisting pressure and not pressurising others.
- that they have a choice to delay sex or to enjoy intimacy without sex.
- the facts about the full range of contraceptive choices, efficacy and options available.
- the facts around pregnancy including miscarriage.
- that there are choices in relation to pregnancy (with medically and legally accurate, impartial information on all options, including keeping the baby, adoption, abortion and where to get further help).
- how the different sexually transmitted infections (STIs), including HIV/AIDs, are transmitted, how risk can be reduced through safer sex (including through condom use) and the importance of and facts about testing.
- about the prevalence of some STIs, the impact they can have on those who contract them and key facts about treatment.
- how the use of alcohol and drugs can lead to risky sexual behaviour.

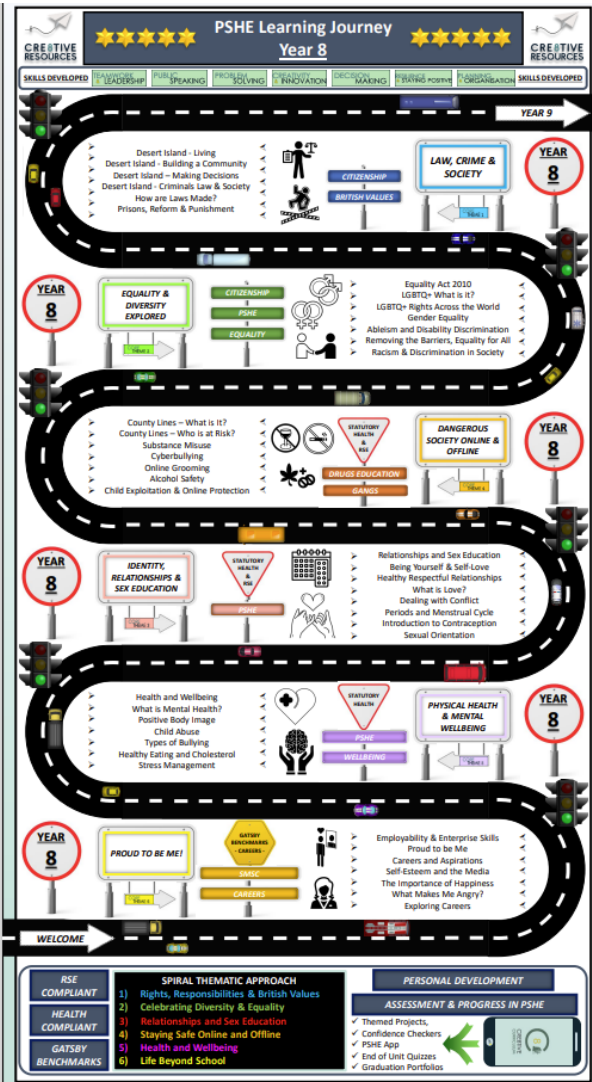
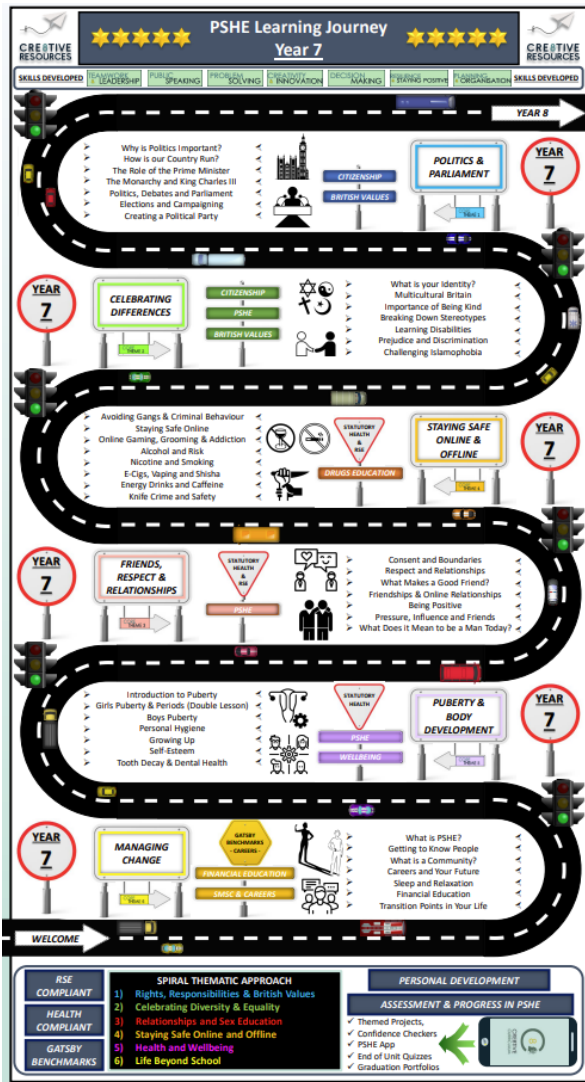
- how to get further advice, including how and where to access confidential sexual and reproductive health advice and treatment.

Since September 2020 parents can only opt to withdraw their child from sex education elements of RSHE (not relationship elements), up to and until three terms before the child turns 16. After that point, if the child wishes to receive sex education rather than be withdrawn, the school must make arrangements to provide the child with sex education during one of those terms.





Appendix 2 – Cre8tive mapping – this is provided as a guide only.





PSHE Learning Journey Year 9

★★★★★

CREATIVE RESOURCES

SKILLS DEVELOPED: LEADERSHIP, PUBLIC SPEAKING, PROBLEM SOLVING, INNOVATION, DECISION MAKING, FINANCIAL LITERACY, ORGANISATION

YEAR 9 **COMBATTING EXTREMISM & TERRORISM**

- Conspiracy Theories & Narratives
- Forms of Extremism
- What is Terrorism?
- War & Conflict
- The Radicalisation Process
- How Does Counter Terrorism Work?
- Antisemitism in the UK

YEAR 9 **CONTRACEPTION & STIS**

- What are STIs?
- Treating STIs and the Clinic
- Contraception Explored
- Contraception - Condoms
- Contraception Explored Further
- HIV and AIDS
- HIV and AIDS Prejudice and Discrimination

YEAR 9 **LEGAL & ILLEGAL DRUGS**

- What is a Drug?
- Different Types of Addictions
- Cannabis Products
- Drug Classifications
- Party Drugs & Illegal Drugs
- The War on Drugs
- Volatile Substance Abuse

YEAR 9 **SEX, THE LAW & CONSENT**

- Sexual Consent and the Law
- FGM and the Law
- Relationships and Partners
- Domestic Abuse and Domestic Violence
- Why Have Sex?
- Delaying Sexual Activity
- Sexual Harassment and Stalking

YEAR 9 **BODY CONFIDENCE**

- How Self-Esteem Changes
- What is a Vulva?
- Bullying in all its forms
- Dealing with Grief and Loss
- Media and Airbrushing
- Cancer Prevention and Healthy Lifestyles

YEAR 9 **ESSENTIAL LIFE SKILLS**

- From Failure to Success
- Assertiveness
- First Aid
- Saving and Managing Money
- Labour Market Information
- Finance, Budgeting and Employment
- Social Media & Online Stress

WELCOME

RSE COMPLIANT	SPIRAL THEMATIC APPROACH	PERSONAL DEVELOPMENT
HEALTH COMPLIANT	<ol style="list-style-type: none"> 1) Rights, Responsibilities & British Values 2) Celebrating Diversity & Equality 3) Relationships and Sex Education 4) Staying Safe Online and Offline 5) Health and Wellbeing 6) Life Beyond School 	ASSESSMENT & PROGRESS IN PSHE
GATSBY BENCHMARKS		<ul style="list-style-type: none"> Themed Projects Confidence Checkers PSHE App End of Unit Quizzes Graduation Portfolios

PSHE Learning Journey Year 10

★★★★★

CREATIVE RESOURCES

SKILLS DEVELOPED: LEADERSHIP, PUBLIC SPEAKING, PROBLEM SOLVING, INNOVATION, DECISION MAKING, FINANCIAL LITERACY, ORGANISATION

YEAR 10 **EXPLORING BRITISH VALUES**

- Critical Thinking & Fake News
- Hate Crime in the UK
- British Values and Identity
- Mutual Respect & Tolerance
- Individual Liberty
- What are Human Rights?
- Democracy Explored

YEAR 10 **EXPLORING WORLD ISSUES**

- International Organisations
- Peace, War & Conflict
- Human Rights During War
- Aid & Supporting Other Countries
- Striking & Trade Unionism
- Women's Rights & Equality
- Fair Trade & Free Trade

YEAR 10 **VIOLENCE, CRIMES & SEEKING SAFETY**

- Honour Based Violence
- Forced Marriages and Breast Ironing
- Online Gaming & Gambling
- Social Media Validation
- Modern Day Slavery
- Keeping Your Data Safe
- Causes of Knife Crime

YEAR 10 **EXPLORING RELATIONSHIPS & SEX EDUCATION**

- Pleasure and Delaying Sexual Activity
- Campaigning Against FGM
- Seeing, Nudes and Dick Pics
- Online Pornography (Myths vs Reality)
- Porn and its Impact on Society
- Unhealthy Relationships & Sexual Assault
- Sexualisation of the Media

YEAR 10 **MENTAL HEALTH & WELLBEING**

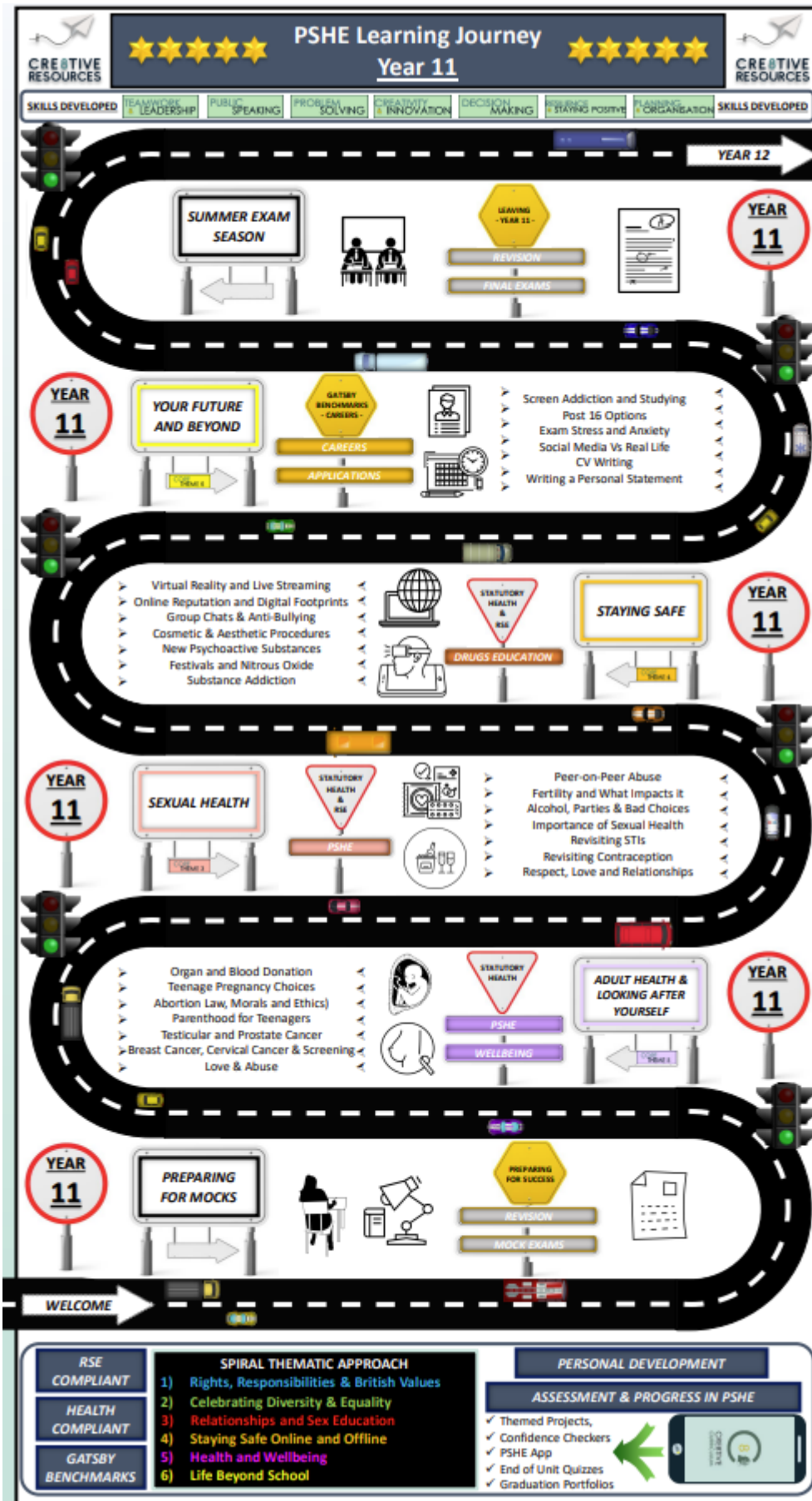
- Child Sexual Abuse
- Screen Time
- Mental Health Illnesses
- Self-Harm
- Suicidal (Thoughts and Feelings)
- Promoting Emotional Wellbeing

YEAR 10 **RIGHTS AND RESPONSIBILITIES**

- Instagram & TikTok Generation
- Targeted Advertising and Your Data
- What is Marriage?
- Rights and Responsibilities
- Consumer Rights
- Employment Rights
- Exploring a Pay Check

WELCOME

RSE COMPLIANT	SPIRAL THEMATIC APPROACH	PERSONAL DEVELOPMENT
HEALTH COMPLIANT	<ol style="list-style-type: none"> 1) Rights, Responsibilities & British Values 2) Celebrating Diversity & Equality 3) Relationships and Sex Education 4) Staying Safe Online and Offline 5) Health and Wellbeing 6) Life Beyond School 	ASSESSMENT & PROGRESS IN PSHE
GATSBY BENCHMARKS		<ul style="list-style-type: none"> Themed Projects Confidence Checkers PSHE App End of Unit Quizzes Graduation Portfolios



4.6.2 The grid below shows specific Relationship and Sex Education content for each year group:

Age

4-5	Family life – which includes a range of family structures; making friends; falling out and making up; being a good friend; dealing with bullying; growing up -how have I changed from baby to now; bodies (NOT including names of sexual parts); respecting my body and looking after it e.g. personal hygiene.
5-6	Recognising bullying and how to deal with it; celebrating differences between people; making new friends; belonging to a family; being a good friend; physical contact preferences; people who help us; qualities as a friend and person; celebrating people who are special to me; life cycles – animal and human; changes in me; changes since being a baby; differences between female and male bodies (correct terminology: penis, vagina, testicles, vulva); respecting my body and understand which parts are private.
6-7	Assumptions and stereotypes about gender; understanding bullying; standing up for self and others; making new friends; gender diversity; celebrating difference and remaining friends; learning with others; group co-operation; different types of family; physical contact boundaries; friendship and conflict; secrets (including those that might worry us); trust and appreciation; expressing appreciation for special relationships; life cycles in nature; growing from young to old; increasing independence; differences in female and male bodies (correct terminology); assertiveness; appreciate that some parts of my body are private.
7-8	Seeing things from others' perspectives; Families and their differences; family conflict and how to manage it (child-centred); witnessing bullying and how to solve it; homophobic bullying; recognising how words can be hurtful; giving and receiving compliments; respect for myself and others; healthy and safe choices; family roles and responsibilities; friendship and negotiation; keeping safe online and who to go to for help; being aware of how my choices affect Others; awareness of how other children have different lives; expressing appreciation for family and friends; how babies grow; understanding a baby's needs; outside body changes at puberty; inside body changes at puberty; family stereotypes.
8-9	Challenging assumptions; judging by appearance; accepting self and others; understanding influences; understanding bullying including the role of the bystander; problem-solving in relationships; identifying how special and unique everyone is; first impressions; working in a group; celebrating contributions of others; healthier friendships; group dynamics; assertiveness; peer pressure; celebrating inner strength; jealousy; love and loss; memories of loved ones; getting on and falling out; girlfriends and boyfriends; showing appreciation to people and animals; being unique; having a baby (simple explanation of conception); girls and puberty; boys and puberty; confidence in change; accepting change.
9-10	Cultural differences and how they can cause conflict; racism; rumours and name-calling; types of bullying; enjoying and respecting other cultures; body image; self-recognition and self-worth; building self-esteem; safer online communities; rights and responsibilities online; online gaming and gambling; reducing screen time; dangers of online grooming; SMARRT internet safety rules; Self and body image; influence of online and media on body image; puberty for girls; puberty for boys; conception (including IVF); growing responsibility; coping with change.



10-11

Children's universal rights; feeling welcome and valued; choices, consequences and rewards; group dynamics; democracy, having a voice; anti-social behaviour; role-modelling; perceptions of normality; understanding disability; understanding what transgender means; power struggles; understanding bullying; inclusion/exclusion; difference as conflict; difference as celebration; empathy; exploitation, including 'county-lines' and gang culture; love and loss; managing feelings; power and control; assertiveness; technology safety; responsibility with technology
use; self-image, body image; puberty and feelings; conception to birth; reflections about change; physical attraction; respect and consent; boyfriends/girlfriends; sexting.

Appendix 3 – Legislation and Guidance

Legislation:

- Education (Independent School Standards) Regulations 2014;
- Where relevant for a particular school: *Statutory framework for the Early Years Foundation Stage* (DfE, March 2017)
- Education and Skills Act 2008
- Education Act 2002
- Children Act 1989 (where relevant for a school within the Federation)
- Childcare Act 2006 (where relevant for a school within the Federation)
- Equality Act 2010
- Children and Families Act 2014
- Children and Social Work Act 2017
- Data Protection Act 2018 and General Data Protection Regulation (GDPR)
- Relationships Education, Relationships and Sex Education and Health Education (England) Regulations 2019
- Smoke-free (Premises and Enforcement) Regulations 2006

Guidance

- [DfE Relationships education, relationships and sex education and health education](#) (DfE, June 2019)
- [Keeping Children Safe in Education](#), (DfE, September 2022) (**KCSIE**) (*please note that this is due to be updated before September*)
- [Working together to safeguard children: statutory guidance on inter-agency working to safeguard and promote the welfare of children](#) (DfE, July 2018)
- [Sexting in schools and colleges: responding to incidents and safeguarding young people](#) (UK Council for Child Internet Safety, August 2016)
- [Multi-agency statutory guidance on female genital mutilation](#) (HM Government, April 2016);
- [Sexual violence and sexual harassment between children in schools and colleges](#) (DfE, May 2018);
- [Searching, screening and confiscation: advice for schools](#) (DfE, January 2018)



- [Relationships education, relationships and sex education and health education FAQs](#) (DfE, May 2018), the Government response to draft *Relationships education and relationships and sex education (RSE) and health education guidance*
- [Preventing and tackling bullying: Advice for Headteachers, staff and governing bodies](#) (DfE, July 2017)
- [DfE guidance on Equality Act 2010: Advice for school leaders, school staff, governing bodies and local authorities](#) (DfE, 2014)
- [Relationships, sex and health education: guide for schools](#) (DfE, June 2019), DfE guide for parents that schools can use to communicate about teaching relationships and health education
- [Testing for substance misuse in schools](#) (Medical Officers of Schools Association, October 2015);
- [DfE and ACPO drug advice for schools](#) (Department for Education and Association of Chief Police Officers, September 2012)
- [Searching, screening and confiscation: advice for schools](#) (DfE, January 2018)
- [Drug penalties guidance](#) (Gov.uk)